



CANYON VILLAGE

WILDOMAR, CALIFORNIA
50 LUXURY HOMES

R.C. HOBBS COMPANY

P R E L I M I N A R Y



WELCOME TO CANYON VILLAGE BY R.C. HOBBS

The vision of one day finding the perfect home is something that we all dream to achieve. At Canyon Village, we make that dream a reality. The gorgeous exteriors feature innovative architectural design that will leave you breathless, while the elegant interior floor plans offer a unique array of spacious living areas for you and your family.

Neatly situated in Southern California's rapidly growing Inland Empire, Wildomar offers small-town charm along with easy access to shopping, entertainment and cultural activities. Whether you want to relax in the scenic region or get your adrenaline going out on beautiful Lake Elsinore, Wildomar can meet your family's needs.

Canyon Village offers three unique floor plan designs ranging from approximately 2,400 square feet to 3,600 square feet with up to six bedrooms and four baths and up to five car garages.

Live the dream at Canyon Village.



P R E L I M I N A R Y

R.C. Hobbs Company reserves the right to make changes or modifications to maps, plans, specifications, materials, features and colors without notice. Optional features and colors may be included at additional cost, subject to construction cut-off dates. Special wall and window treatments, upgraded floor coverings, softscape, hardscape, landscape and other items featured in and around the model homes are decorator suggested and not included in the purchase price. All renderings, floorplans and maps are artist's conception and are not intended to be actual depictions of the buildings, fencing, walks, driveways or landscaping. Ask your sales representative for details. Plans to buildout this project are subject to change without notice. See sales representatives for more information regarding overall effective tax rates for this area. Road locations and improvements are based on the city-approved plans and are subject to change. 052108

R.C. HOBBS



RESIDENCE ONE

ELEVATIONS

Approximately 2,414 Sq. Ft.
4 Bedrooms, 2 Baths, Family Room, Living Room, Dining Room
3-Car Garage



1A-Porch



1B



1C-Porch

P R E L I M I N A R Y



R.C. Hobbs Company reserves the right to make changes or modifications to maps, plans, specifications, materials, features and colors without notice. Optional features and colors may be included at additional cost, subject to construction cut-off dates. Special wall and window treatments, upgraded floor coverings, softscape, hardscape, landscape and other items featured in and around the model homes are decorator suggested and not included in the purchase price. All renderings, floorplans and maps are artist's conception and are not intended to be actual depictions of the buildings, fencing, walks, driveways or landscaping. Ask your sales representative for details. Plans to buildout this project are subject to change without notice. See sales representatives for more information regarding overall effective tax rates for this area. Road locations and improvements are based on the city-approved plans and are subject to change. 052108

R.C. HOBBS



RESIDENCE ONE

FLOORPLANS

Approximately 2,414 Sq. Ft.
 4 Bedrooms, 2 Baths, Family Room, Living Room, Dining Room
 3-Car Garage



P R E L I M I N A R Y



R.C. Hobbs Company reserves the right to make changes or modifications to maps, plans, specifications, materials, features and colors without notice. Optional features and colors may be included at additional cost, subject to construction cut-off dates. Special wall and window treatments, upgraded floor coverings, softscape, hardscape, landscape and other items featured in and around the model homes are decorator suggested and not included in the purchase price. All renderings, floorplans and maps are artist's conception and are not intended to be actual depictions of the buildings, fencing, walks, driveways or landscaping. Ask your sales representative for details. Plans to buildout this project are subject to change without notice. See sales representatives for more information regarding overall effective tax rates for this area. Road locations and improvements are based on the city-approved plans and are subject to change. 052108

R.C. HOBBS



RESIDENCE TWO

ELEVATIONS

Approximately 2,989 Sq. Ft.
5 Bedrooms, 3 Baths, Family Room, Living Room, Dining Room
4-Car Garage



2A



2B



2C

P R E L I M I N A R Y



R.C. Hobbs Company reserves the right to make changes or modifications to maps, plans, specifications, materials, features and colors without notice. Optional features and colors may be included at additional cost, subject to construction cut-off dates. Special wall and window treatments, upgraded floor coverings, softscape, hardscape, landscape and other items featured in and around the model homes are decorator suggested and not included in the purchase price. All renderings, floorplans and maps are artist's conception and are not intended to be actual depictions of the buildings, fencing, walks, driveways or landscaping. Ask your sales representative for details. Plans to buildout this project are subject to change without notice. See sales representatives for more information regarding overall effective tax rates for this area. Road locations and improvements are based on the city-approved plans and are subject to change. 052108

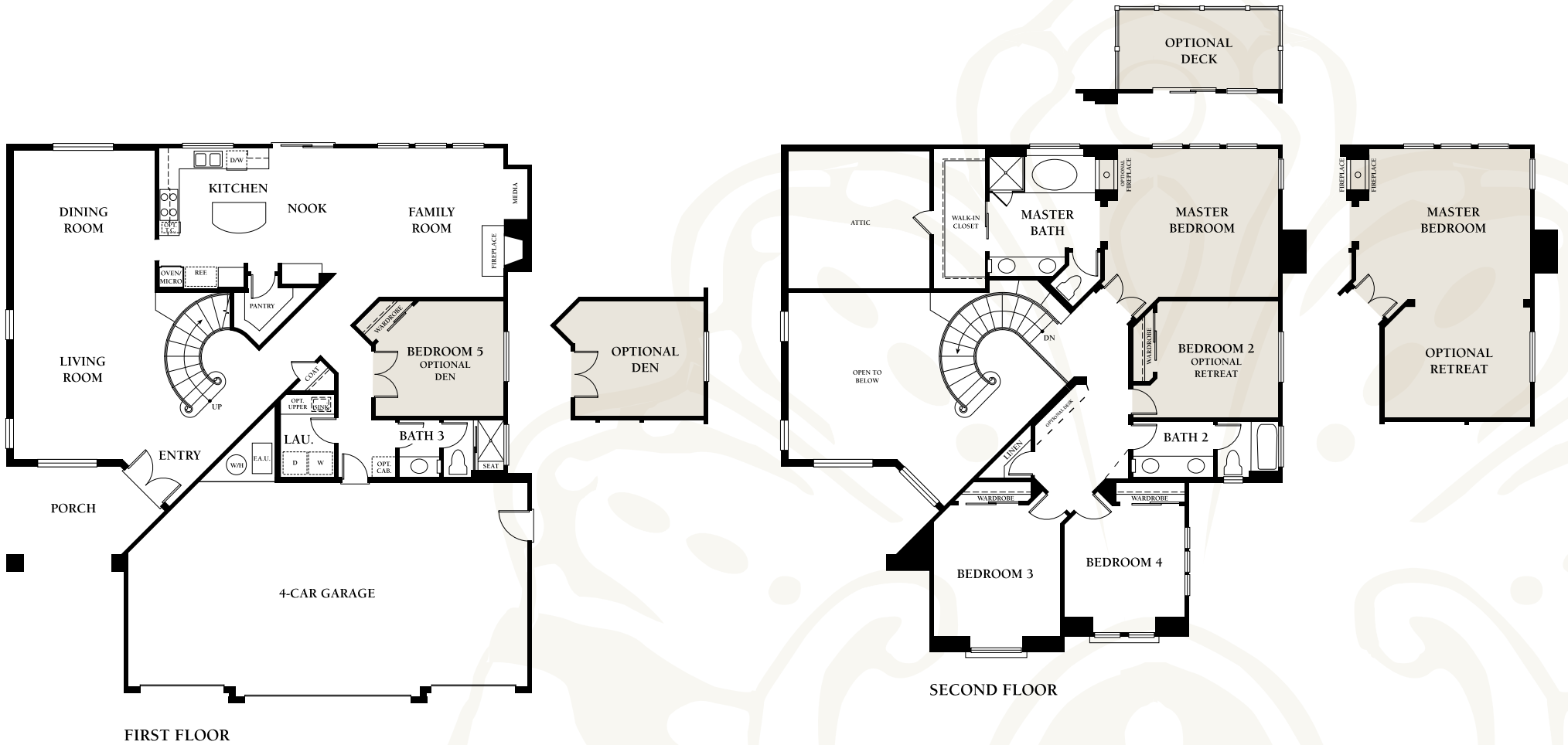
R.C. HOBBS



RESIDENCE TWO

FLOORPLANS

Approximately 2,989 Sq. Ft.
 5 Bedrooms, 3 Baths, Family Room, Living Room, Dining Room
 4-Car Garage



P R E L I M I N A R Y



R.C. Hobbs Company reserves the right to make changes or modifications to maps, plans, specifications, materials, features and colors without notice. Optional features and colors may be included at additional cost, subject to construction cut-off dates. Special wall and window treatments, upgraded floor coverings, softscape, hardscape, landscape and other items featured in and around the model homes are decorator suggested and not included in the purchase price. All renderings, floorplans and maps are artist's conception and are not intended to be actual depictions of the buildings, fencing, walks, driveways or landscaping. Ask your sales representative for details. Plans to buildout this project are subject to change without notice. See sales representatives for more information regarding overall effective tax rates for this area. Road locations and improvements are based on the city-approved plans and are subject to change. 052108

R.C. HOBBS



RESIDENCE THREE

ELEVATIONS

Approximately 3,249 to 3,605 Sq. Ft.
Up to 6 Bedrooms, Up to 4 Baths, Family Room, Living Room, Dining Room
3 to 5-Car Garage



3A



3B



3C



3XA



3XB



3XC

P R E L I M I N A R Y



R.C. Hobbs Company reserves the right to make changes or modifications to maps, plans, specifications, materials, features and colors without notice. Optional features and colors may be included at additional cost, subject to construction cut-off dates. Special wall and window treatments, upgraded floor coverings, softscape, hardscape, landscape and other items featured in and around the model homes are decorator suggested and not included in the purchase price. All renderings, floorplans and maps are artist's conception and are not intended to be actual depictions of the buildings, fencing, walks, driveways or landscaping. Ask your sales representative for details. Plans to buildout this project are subject to change without notice. See sales representatives for more information regarding overall effective tax rates for this area. Road locations and improvements are based on the city-approved plans and are subject to change. 052108

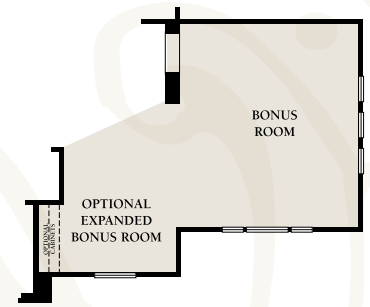
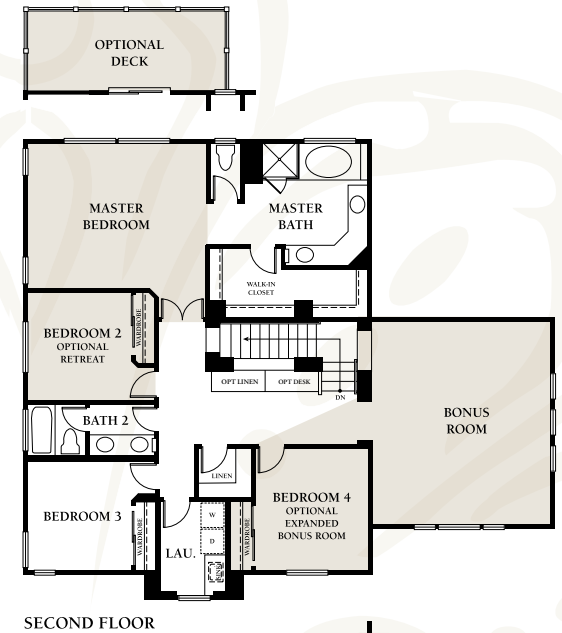
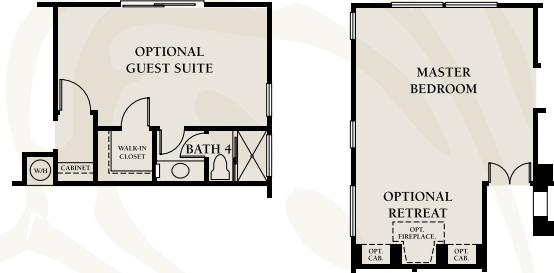
R.C. HOBBS



RESIDENCE THREE

FLOORPLANS

Approximately 3,249 to 3,605 Sq. Ft.
 Up to 6 Bedrooms, Up to 4 Baths, Family Room, Living Room, Dining Room
 3 to 5-Car Garage



P R E L I M I N A R Y

R.C. HOBBS

R.C. Hobbs Company reserves the right to make changes or modifications to maps, plans, specifications, materials, features and colors without notice. Optional features and colors may be included at additional cost, subject to construction cut-off dates. Special wall and window treatments, upgraded floor coverings, softscape, hardscape, landscape and other items featured in and around the model homes are decorator suggested and not included in the purchase price. All renderings, floorplans and maps are artist's conception and are not intended to be actual depictions of the buildings, fencing, walks, driveways or landscaping. Ask your sales representative for details. Plans to buildout this project are subject to change without notice. See sales representatives for more information regarding overall effective tax rates for this area. Road locations and improvements are based on the city-approved plans and are subject to change. 052108





CANYON VILLAGE AMENITIES

INTERIOR ELEGANCE AND COMFORT

- **Hardwood Beech stain-grade cabinetry throughout**
- **High ceilings throughout**
- **Enameled wood caps on most low walls**
- **Pre-wire for future ceiling fan in family room and all bedrooms**
- **Cultured marble countertops with under mount sink in all secondary baths**
- **Spacious laundry room with built-in hardwood Beech stain-grade base cabinets, concealed hinges and cultured marble countertop. Includes fiberglass laundry room sink with Moen faucet.**
- **Magnificent staircase with custom crafted handrail, oversize spindles and newel posts. (Residence 2)**
- **Wood-grain interior doors**
- **Colonial raised-panel wardrobe doors**
- **Weslock chrome finish hardware throughout**
- Central air condition and heating systems with digital night setback thermostats and deluxe air registers
- Recessed gas stub for clothes dryer
- Spacious and functional secondary bedrooms
- Flush mounted recessed lighting at select locations
- Contemporary white rocker style electrical switches throughout
- Structured wiring with all data and information cables home run to central panel. Wiring includes:
 - High-speed Category 5 data and telephone wire in selected area
 - RG-6 coaxial television cable in selected areas
- Engineered floor joists to minimize floor squeaks
- Energy-efficient low E, dual-paned windows with white vinyl frames
- 50-gallon energy efficient water heater (75-gallon w/guest suite)
- R-38 insulation, which meets or exceeds current energy standards, in attic areas
- Fully insulated exterior walls and exterior ceilings at living areas
- Generous built-in linen cabinetry
- Vinyl flooring throughout all baths, laundry, and kitchen areas

EXQUISITE EXTERIOR DETAILING

- **Distinctive exterior elevations with beautiful siding that features brick and stone veneers**
- **Architecturally coordinated, energy efficient and fire resistant concrete roofing**
- **Unique lighting to match each exterior elevation plan**
- **Professionally designed front yard landscaping**
- **Therma-Tru entry doors**
- **Beautiful Brushed Nickel-Finished Weslock hardware on entry door**
- **Enclosed side yard with decorative block walls and wrought iron side gate**
- **Prepped for "Tubes in the Walls"® Pest Defense System**
- Professionally selected exterior color schemes
- Gas stub for future backyard barbeque
- Finished drywall garage interiors with convenient electrical outlets
- Convenient automatic garage doors with opener (per 2 car section)
- Automatic irrigation timers

GOURMET KITCHENS

- **Granite kitchen countertops with 6" backsplash and full backsplash behind cook top.**
- **Upgraded Whirlpool appliance package, in choice of white or black, including:**
 - **36" cook top with four sealed burners**
 - **36" high performance hood**
 - **30" built-in self cleaning double ovens**
 - **Built-in large capacity microwave oven**
 - **Five-cycle dishwasher with sound package**
- **Abundance of impressive Beech cabinetry with raised panel doors, concealed hinges, fixed and adjustable shelving, white laminate interiors, and smooth glide drawers.**
- **Pull-out recycle bin with container**
- Central island with breakfast bar
- Heavy-duty garbage disposal
- Dual compartment sink with Moen faucet with pull out spray
- Under cabinet fluorescent lighting
- Family-sized breakfast nook with 8' slider door
- Spacious walk-in Pantry

MASTER SUITE ELEGANCE

- **White 6" x 6" ceramic tile countertop at adult-height Pullman**
- **Elongated toilet**
- **Private water closet**
- **Decorative widespread Moen faucets**
- **Beautiful Beech cabinets with laminate interiors**
- Upgraded plumbing fixtures and hardware
- Large walk-in closets with shelf and pole at select locations

LUXURIOUS BATHS

- **Stunning white cultured marbled countertop and 4" backsplash**
- **Beautiful Beech cabinets with laminate interiors**
- **Moen bath fixtures**
- Fiberglass tub/shower combinations with easy care simulated tile walls

ENERGY EFFICIENT FEATURES

- **Energy Star Compliant house**
- **Pre-wire for future ceiling fan in family room and all bedrooms**
- Central air conditioning and heating system
- Programmable digital thermostat
- Energy efficient dishwasher
- R-38 insulation in all ceilings except vaulted ceilings
- Dual-pane low E vinyl clad windows

P R E L I M I N A R Y

R.C. Hobbs Company reserves the right to make changes or modifications to maps, plans, specifications, materials, features and colors without notice. Optional features and colors may be included at additional cost, subject to construction cut-off dates. Special wall and window treatments, upgraded floor coverings, softscape, hardscape, landscape and other items featured in and around the model homes are decorator suggested and not included in the purchase price. All renderings, floorplans and maps are artist's conception and are not intended to be actual depictions of the buildings, fencing, walks, driveways or landscaping. Ask your sales representative for details. Plans to buildout this project are subject to change without notice. See sales representatives for more information regarding overall effective tax rates for this area. Road locations and improvements are based on the city-approved plans and are subject to change. 052108

R.C. HOBBS



BUILDER STORY

"A Tradition of Innovation and Craftsmanship."

Years of experience, planning and "above all" vision go into the creation of every R.C. Hobbs' community. The name R.C. Hobbs has been associated with quality homes for more than a quarter of a century. The R.C. Hobbs Company combines the talents of a carefully chosen team of professionals to develop imaginative homes with the greatest attention to every detail.

Each R.C. Hobbs' home is planned with your comfort and convenience in mind. Elegance and warmth are blended to bring you a spacious, livable environment perfect for entertaining and relaxing.

With the construction of over 5000 homes, the award winning R.C. Hobbs Company has earned its reputation as a leader and innovator in the creation of fine residential and commercial communities.



P R E L I M I N A R Y

R.C. Hobbs Company reserves the right to make changes or modifications to maps, plans, specifications, materials, features and colors without notice. Optional features and colors may be included at additional cost, subject to construction cut-off dates. Special wall and window treatments, upgraded floor coverings, softscape, hardscape, landscape and other items featured in and around the model homes are decorator suggested and not included in the purchase price. All renderings, floorplans and maps are artist's conception and are not intended to be actual depictions of the buildings, fencing, walks, driveways or landscaping. Ask your sales representative for details. Plans to buildout this project are subject to change without notice. See sales representatives for more information regarding overall effective tax rates for this area. Road locations and improvements are based on the city-approved plans and are subject to change. 052108

R.C. HOBBS



MAP AND DIRECTIONS



From the 15 South, exit and turn right onto Bundy Canyon, left on Orchard St., right on Canyon Dr.

From the 215 South, exit and turn right onto Scott Road, left on Orchard St., right on Canyon Dr.

Sales Office Address:
34225 Clovis Way
Wildomar, CA 92595

t: 951-674-0400
f: 714-221-2138

CanyonVillage@RCHobbs.com

P R E L I M I N A R Y



R.C. Hobbs Company reserves the right to make changes or modifications to maps, plans, specifications, materials, features and colors without notice. Optional features and colors may be included at additional cost, subject to construction cut-off dates. Special wall and window treatments, upgraded floor coverings, softscape, hardscape, landscape and other items featured in and around the model homes are decorator suggested and not included in the purchase price. All renderings, floorplans and maps are artist's conception and are not intended to be actual depictions of the buildings, fencing, walks, driveways or landscaping. Ask your sales representative for details. Plans to buildout this project are subject to change without notice. See sales representatives for more information regarding overall effective tax rates for this area. Road locations and improvements are based on the city-approved plans and are subject to change. 052108

R.C. HOBBS